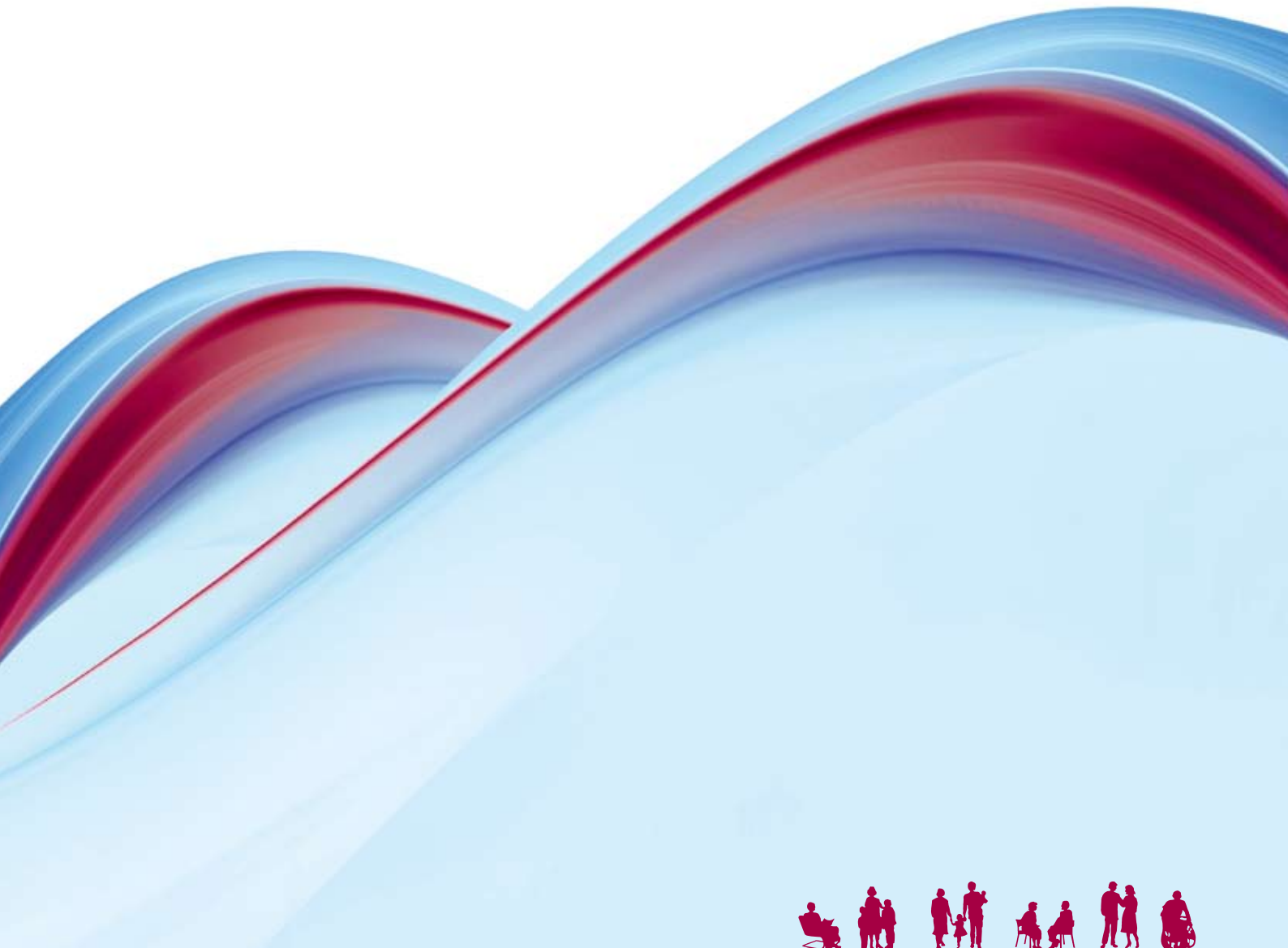


annual report

2009



LUTHERAN COMMUNITY CARE

condensed financial report

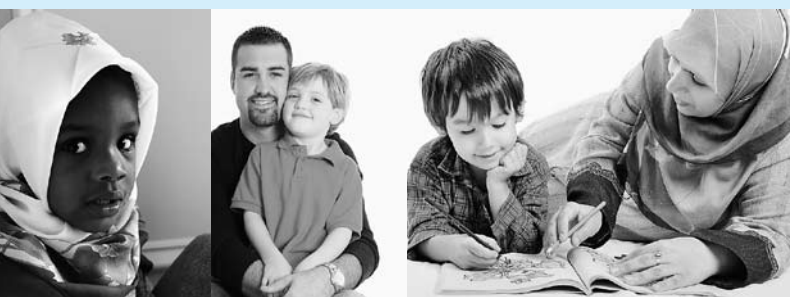
for the year ended 30 june 2009

Income statement

	2009 \$	2008 \$
Revenues from ordinary activities	781,623	710,197
Donations received	374,846	355,025
Grants received for operating activities	2,975,791	2,345,757
Interest received	10,816	22,002
Gains on disposal of non-current assets	–	6,266
Employee benefits expense	(2,768,944)	(2,517,792)
Administration expenses	(204,694)	(309,942)
Depreciation and amortisation expenses	(75,851)	(78,314)
Other expenses from ordinary activities	(1,076,878)	(801,067)
Surplus/(Deficit) from ordinary activities	16,709	(267,868)
Transfers (to) reserves:		
Trust fund donations reserve	(10,800)	(12,000)
Total changes in funds	5,909	(279,868)

Balance sheet

	2009 \$	2008 \$
CURRENT ASSETS		
Cash on hand	1,800	2,200
Cash at bank	452,219	353,146
Trade and other receivables	372,398	79,522
TOTAL CURRENT ASSETS	826,417	434,868
NON-CURRENT ASSETS		
Property	1,938,296	1,934,771
Plant and equipment	217,532	268,152
TOTAL NON-CURRENT ASSETS	2,155,828	2,202,923
TOTAL ASSETS	2,982,245	2,637,791
CURRENT LIABILITIES		
Trade and other payables	213,965	45,483
Provisions – Current	128,661	116,523
Government grants received in advance	384,133	167,710
Other grants received in advance	123,369	177,089
TOTAL CURRENT LIABILITIES	850,128	506,805
NON-CURRENT LIABILITIES		
Provisions – Non-current	118,406	124,140
TOTAL NON-CURRENT LIABILITIES	118,406	124,140
TOTAL LIABILITIES	968,534	630,945
NET ASSETS	2,013,711	2,006,846
EQUITY		
Accumulated funds	1,763,022	1,728,358
Reserves	250,689	278,488
TOTAL EQUITY	2,013,711	2,006,846



chairperson's report

for the year ended 30 June 2009

The past year has seen the team at LCC strive and deliver on so many programs and initiatives to benefit those in need, the disadvantaged, and those wanting guidance and support in our community.

LCC Council accepted with deep regret Dr Yvonne Bentham's resignation. Council has had a strong working relationship with Yvonne – her vision, her work ethic, her faith and sense of humour have been qualities we have respected. I have included some parting words from Yvonne.

"It has been a privilege to be in a position where I have been able to make some contribution, be it ever so humble, toward easing the hardship others experience. When I joined LCC nearly 4 years ago I was immediately impressed by the deep dedication and loyalty of all those that worked here. The passion, enthusiasm and drive of the staff and volunteers I met was inspiring. All of my experiences since then have reinforced those initial impressions.

In recent years the LCC Council, staff and volunteers have worked vigorously to raise the profile of LCC so that it has a stronger voice within the community. A great deal of effort has also been channelled into consolidating the programs provided by LCC, and to ensuring its services are highly integrated in terms of how resources, skills and talents are used and shared. I am delighted to announce the establishment of two new programs that are dear to my heart – Foster Care Program and the Money Management Program. Two new LCC offices have been established to accommodate these programs. They are in Glynde (Eastern suburbs) and Alice Springs, respectively.



Standing: Eric Schubert, John Munchenberg, Richard Brown, David Christian

Seated: Josephine Monk, Sue Renner (Chairperson), Daphne Redding (absent, Matt White)

The decision to leave LCC has been a difficult one but it has been made easier knowing that the organisation is stronger and healthier than ever, and the optimism that pervades the place is at an all time high. I am also extremely pleased that my successor will be Helen Lockwood. I am more than confident she will do brilliantly in establishing the vision, actions and tasks encapsulated within the new Strategic Plan of LCC." ~Yvonne

Thankyou to all of our supporters and stakeholders – without you we could not do the work we see as vital in our community.

Sue Renner
Chairperson, LCC Council

LUTHERAN COMMUNITY CARE
FOR THE YEAR ENDED 30 JUNE 2009
INDEPENDENT AUDIT REPORT
TO THE COUNCIL OF
LUTHERAN COMMUNITY CARE

Audit Opinion

In our opinion, the financial report of Lutheran Community Care presents fairly in all material respects the financial position of Lutheran Community Care as of 30 June 2009 and of its financial performance for the year then ended in accordance with the accounting policies described in Note 1 to the financial statements.

MRL GROUP PTY LTD
Chartered Accountants

Mark LeCornu
Director

LCC in the South Australian and Northern Territory Community

– at a glance

Alternative Care

Home Based Foster Care – Recruiting, Assessing, Training and Supporting Foster Carers to provide stable and nurturing environments for children and young people in need.

Breakfast Club

A healthy breakfast is provided for children who need it at the Nuriootpa Primary School. The aim is to equip students both physically and socially to meet the demands of the day.

Building Blocks for Stronger Families – Family Relationships Education

We offer learning opportunities which strengthen family relationships. This includes parenting, life transitions and coping with the ups and downs of life. “Toolbox” parenting groups and a “Talking with Tots” group for parents of preschoolers is held weekly.

Calvary Housing Association Inc.

Longer term housing for 8 families – 6 southern / 2 northern suburbs. Access to support if required through the Early Intervention Program.

Centre for Learning

Offers a range of relationship and parenting education sessions for individuals and families, as well as community workshops, Training for the Emergency Relief sector is provided across the state.

Care and Clothing Shops

The three charity shops provide cheap options of clothing, bedding and small household goods. No cost to people who use our Emergency Relief services.

Christmas Hampers

Christmas hampers are provided for people in need at Christmas time. The hampers are for people in receipt of a low income. The Christmas Hamper program is organised from the Barossa and Blair Athol offices.

Communities for Children

Parenting programs; support groups and playgroups for families with children 0-5 years.

Community Gardens

Keen gardeners volunteer their time to pass on gardening skills and grow vegetables.

Community Visitors Scheme

This Scheme links volunteer Community Visitors with residents in aged care facilities to provide one to one friendship particularly to residents who are socially isolated. A Coordinator and Regional Worker works with 41 aged care facilities and a team of 35 volunteers in the Barossa and 60 volunteers in the Adelaide Hills and metropolitan area.

Cook up a Storm

Individual cooking lessons held weekly.

Early Intervention Program

For families who are at risk of homelessness. Intensive support to maintain current tenancy.

Emergency Relief

Emergency Relief offers support to clients on Centrelink payments or low incomes for food, clothing and small household goods. It provides support for anyone who is in immediate need to overcome an unforeseen event. ER can be in the form of financial or material assistance, e.g. food vouchers, clothing, bedding, together with community information.



Family Dispute Resolution

Mediation: This service assists separating parents to discuss issues, consider options and work out how best to reach agreements on parenting arrangements for their children. It focuses on the best interests and needs of the child.

Family and Relationship Counselling

This service provides a confidential and professional counselling service to individuals, couples and families.

Family Relationships Services Program (FRSP)

Provision of: Counselling services for personal, relationship and family issues, Men and Family Relationships (Murraylands based) and Family Relationship Education & Skills Training (FREST). Professional qualified counsellors and group workers.

Financial Counselling / Budget Advice

Financial Counsellor helps plan a budget and payment plans, offers advocacy and negotiation with creditors.

Flexible Learning Options

In partnership with Mt Barker High School, assists young people to develop and maintain their Flexible Learning Plan (FLP) and through case work with young people and their families, to overcome identified barriers to engagement in education and employment options.

Home Visiting Program

Volunteers visit vulnerable families in their homes to assist with practical parenting skills and support.

Job Club

To provide information and skills to assist clients obtain employment.

Jobs Placement Employment and Training (JPET)

This program assists young adults between the ages of 15 and 25 to find a job or suitable training, provides emergency relief, emergency accommodation, counselling, and support of recreational activities to build their self esteem and self confidence.

Living Healthy Project

The 'Living Healthy Project' works with disadvantaged families in the North West/ East of Adelaide (Kilburn, Blair Athol, Enfield and Clearview) to improve the nutrition status of these families, and introduce physical activity as a regular feature in their everyday life.

Low Income Support

This is a State funded program that is an important mechanism for investing in a strong community services sector. This program is administered through the Community Connect Branch with the Department of Families and Communities. The program is established to support, promote or extend any service, project or facility that will advance the welfare of children, youth or any other section of the community.

Mental Health Support Group

This Group runs in partnership with South East Community Health and St Paul's Lutheran Church Millicent to offer support activities to anyone who has suffered a mental health condition, anyone who has a



mental health disorder, anyone who cares for someone with mental health issues and anyone who would like to provide support for people with mental health problems.

Mobile Crèche Service

Volunteer crèche workers recruited and trained and deployed to community organizations to assist with child care while parents attend parenting programs.

Money Management Services

Financial literacy program involving education and individual mentoring for indigenous people based in Alice Springs and surrounding communities.

Supported Accommodation Assistance Program

Housing for 25 families who are homeless and in crisis. Short to medium term accommodation. 13 houses southern / 6 houses northeast suburbs. 6 crisis intervention units/core and cluster.

Refugees Services

Delivering settlement services to new arrivals from refugee backgrounds through case-work, mentoring new and emerging communities, volunteer support and innovative projects.

On Friday Night in Kilburn

This program is a youth driven music, dance and film project that engages 60 marginalised young people (including culturally and linguistically diverse and indigenous young people) in the Kilburn and Blair Athol areas to express their experiences, feelings and thoughts on binge drinking. The project incorporates education on the associated risk factors of binge drinking and will be documented on a DVD to be used as an education tool in communities.

Personal Support Program

This service provides help to the most vulnerable members of our community who have found themselves in a position of homelessness, mental illness, drug or alcohol addition, domestic violence or abuse.

Small Steps For Families

A home based family visiting service providing support, information and referrals for people who may feel overwhelmed by family pressures. Volunteer visits weekly for 1-2 hours for up to six months.

Tax Help

Volunteers help people in receipt of low incomes and pensions to fill in and submit straight forward tax returns. Service available July to October.

Volunteers

Volunteers have been an integral part of LCC in its 40 years of existence. LCC strives for best practice in volunteer management. We have 550 volunteers throughout the organisation actively involved and contributing to many programs including, Emergency Relief, Clothing Shops, Mobile Crèche, Home and Community Visiting, Refugee Services, Job Club, Hampers and administration. LCC would not be who we are without our volunteers.

Workforce Barriers

A program for skilled migrants. This program is run for new migrants living in the Limestone Coast and who do not qualify for government funding or other employment or career development assistance. The program gives the participant individual case management, assistance to manage their own career and the chance to learn about the Australian workplace culture and local labour market information.



sharing the love of Christ – building caring communities

State Office

'GraceWorks'
Level 1, 219 Main North Road Sefton Park SA 5083
Postal: PO Box 1020 Prospect East SA 5082
Phone: 08 8269 9333 Fax: 08 8269 9390
Email: stateoffice@lccsa.org.au www.lccsa.org.au

Alice Springs

55A Gap Road Alice Springs NT 0870
Postal: PO Box 3469 Alice Springs NT 0871
Phone: 08 8953 5160 Fax: 08 8953 1458
Email: alicesprings@lccsa.org.au

Angaston

Zion Lutheran Church
85 Murray St Angaston SA 5353
Phone: 08 8564 3814
Email: barossa@lccsa.org.au

Barossa Valley

16 Gawler Street Nuriootpa SA 5355
Phone: 08 8562 2688 Fax: 08 8562 2657
Email: barossa@lccsa.org.au

Blair Athol

309 Prospect Rd Blair Athol SA 5084
Postal: PO Box 288 Kilburn SA 5084
Phone: 08 8269 9300 Fax: 08 8269 9345
Email: blairathol@lccsa.org.au

Glynde

Zion Lutheran Church
Postal: PO Box 2137 Magill North SA 5072
Phone: 08 8337 8787 Fax: 08 8337 2831
Email: fostercare@lccsa.org.au

Ingle Farm

FamilyZone Hub Ingle Farm Primary School
2 Belalie Rd Ingle Farm SA 5098
Postal: PO Box 72 Ingle Farm SA 5098
Phone: 08 8349 6099 Fax: 08 8359 5394
Email: inglefarm@lccsa.org.au

Magill

Centre for Learning
19 Edward St Magill SA 5072
Postal: PO Box 2137 Magill North SA 5072
Phone: 08 8331 3111 Fax: 08 8364 5824
Email: magill@lccsa.org.au

Morphett Vale

Family Accommodation and Support Unit
Phone: 08 8326 4688 Fax: 08 8326 5934
Email: morphettvale@lccsa.org.au

Mount Barker

c/- TAFE Campus
Dumas St Mt Barker SA 5251
Phone: 08 8391 5266 Fax: 08 8391 5188
Email: mountbarker@lccsa.org.au

Murraylands

5 Marchand St Murray Bridge SA 5253
Phone: 08 8531 3644 Fax: 08 8531 0106
Email: murraylands@lccsa.org.au

Care and Clothing Shops

307 Prospect Road
Blair Athol SA 5084
Phone: 08 8269 9300

236 Payneham Road
Payneham SA 5070
Phone: 08 8362 0604

Smithfield Plains Shopping Centre
240 Peachey Road
Smithfield Plains SA 5114
Phone: 08 8284 3600



we thank our major supporters

Commonwealth Government

- * Commonwealth Attorney General's Department
- * Department of Employment and Workplace Relations
- * Department of Families, Housing, Community Services and Indigenous Affairs
- * Department of Health and Ageing
- * Department of Immigration and Citizenship

Local Government

- * Barossa Council
- * City of Port Adelaide Enfield
- * City of Prospect
- * Rural City of Murray Bridge

Lutheran Church of Australia, SA/NT District

- * Congregations and members
- * Congregations that partner with Lutheran Community Care
- * Lutheran Laypeople's League
- * Lutheran Schools – SA/NT

Major Sponsors

- * Community Benefit SA
- * Mt Barker TAFE
- * Rural Development Australia: Murraylands
- * Wyatt Benevolent Institute
- * Zinnbauer Fund

South Australian Government

- * Department of Families, Housing, Community Services and Indigenous Affairs
- * Department of Further Education, Employment, Science and Technology
- * Office of Recreation and Sport



Lutheran Church
SOUTH AUSTRALIA / NORTHERN TERRITORY